

Charlton®



**Only suitable for well insulated areas and not designed
to be the primary heat source**

3KW ELECTRIC FAN HEATER

MODEL NO: DEVIL 7003

PART NO: 6935450

OPERATION & MAINTENANCE INSTRUCTIONS



ORIGINAL INSTRUCTIONS

DL1025 Iss 13

INTRODUCTION

Thank you for purchasing this CLARKE product.

Before attempting to use this product, please read this manual thoroughly and follow the instructions carefully.

GUARANTEE

This product is guaranteed against faulty manufacture for a period of 12 months from the date of purchase. Please keep your receipt which will be required as proof of purchase.

This guarantee is invalid if the product is found to have been abused or tampered with in any way, or not used for the purpose for which it was intended.

Faulty goods should be returned to their place of purchase, no product can be returned to us without prior permission.

This guarantee does not effect your statutory rights.

FUNCTION AND OPERATING PARAMETERS

This is a forced air heater. It's intended use is for drying and the warming of commercial/industrial buildings and areas where adequate ventilation is provided.

- It must be operated as prescribed in the operating manual.
- It is not intended to be used for domestic use or for the heating of habitable areas.
- It is not intended to be used to reach and maintain a certain level of human thermal comfort within an enclosed space in which the heater is situated.
- It is not intended to be used in enclosed areas with restricted ventilation.
- It is not intended for warming animals or live stock.

THE FOLLOWING TABLE ADDRESSES THE INFORMATION REQUIREMENTS OF REG.2024/ 1103

Item	Symbol	Value	Unit
Heat output			
Nominal heat output	P_{nom}	3.000	kW
Minimum heat output (indicative)	P_{min}	1.500	kW
Maximum continuous heat output	$P_{max, c}$	3.000	kW
Auxiliary electricity consumption			
In off mode	P_o	0.000	W
In standby mode	P_{sm}	0.000	W
In idle mode	P_{idle}	0.000	W
In network standby	P_{nsm}	0.000	W
Seasonal space heating energy efficiency in active mode	$\eta_{s, on}$	85	%
Standby mode with display information or status	-	No	-
Type of heat output/room temperature control (select one)			
Single stage heat output, no temperature control			No
Two or more manual stages, no temperature control			No
With mechanical thermostat room temperature control			Yes
With electronic temperature control			No
Electronic temperature control with day timer			No
Electronic temperature control with week timer			No
Other control options (multiple selections possible)			
Room temperature control with presence detection			No
Room temperature control with open window detection			No
Room temperature control with distance control option			No
Room temperature control with adaptive start control			No
Room temperature control with working time limitation			No
Room temperature control with black bulb sensor			No
Room temperature control with self-learning functionality			No
Room temperature control with control accuracy			No

SAFETY SYMBOLS

The following symbols appear on the unit.

	Hot Surface, Do Not Touch		Do Not Cover
		DO NOT COVER	

SAFETY RULES

Make sure that you read, understand and comply with the following.

ELECTRICAL SAFETY



WARNING: THIS HEATER MUST BE EARTHED

1. Electrical appliances must match the power outlet. **NEVER** modify the plug in any way. **DO NOT** use adaptor plugs with earthed (grounded) appliances. Correct plugs and outlets will reduce the risk of electric shock.
2. **DO NOT** use an extension lead with this heater.
3. **DO NOT** abuse the electrical cable. **NEVER** use the cable for pulling or unplugging the heater. Keep the cable away from sources of heat, oil, sharp edges or moving parts. Damaged or tangled cables increase the risk of electric shock.
4. Keep the power cable well away from machines and ensure an adequate electrical supply is close at hand so that the operation is not restricted by the length of the cable.
5. **ALWAYS** disconnect from the power supply before moving the heater or performing any cleaning or maintenance tasks.
6. Inspect the mains cable regularly for signs of damage. **DO NOT** use if it is damaged, and **ALWAYS** keep it away from the source of heat.
7. Check the heater for damage before use. **DO NOT** use if the heater tubes/elements are damaged or broken. Any damage should be properly repaired or the part replaced. If in doubt, **DO NOT** use. Consult your local CLARKE dealer.

MAINTENANCE.



WARNING: SERVICING OR INTERNAL MAINTENANCE MUST ONLY BE CARRIED OUT BY THE CLARKE SERVICE DEPARTMENT.

1. Check that the heater is in good working order. Take immediate action to repair or replace damaged parts.
2. **DO NOT** allow the heating elements to become covered with dust which could become a fire hazard. If used in a dusty workplace it should be cleaned as described under Cleaning and Maintenance.
3. Only recommended parts should be used. Unapproved parts may be dangerous and will invalidate the warranty.
4. **DO NOT** attempt to repair a damaged heater, contact the CLARKE service department.

POSITIONING



WARNING: DO NOT USE THE HEATER NEAR FLAMMABLE MATERIAL, LIQUIDS, SOLIDS, GASSES OR COMPRESSED GAS CYLINDERS ETC.

1. This heater is designed for indoor use only.
2. **DO NOT** use this heater in small rooms when they are occupied by persons not capable of leaving the room on their own unless constant supervision is provided.
3. **DO NOT** use this heater in the immediate surrounds of a bath, a shower, a swimming pool or wet surfaces.
4. **NEVER** place the heater against or near any surface such as a wall, door, curtains, furniture or combustible material etc. Allow at least 2 metre clearance.
5. **DO NOT** place the heater immediately below any electrical outlet.
6. **DO NOT** place the heater on a raised surface or anywhere where it could topple over. **ALWAYS** use on a horizontal and stable surface.
7. **ALWAYS** ensure that the grille cannot be blocked.
8. **DO NOT** operate fan heaters in explosive atmospheres such as in the presence of flammable liquids, gases or dust such as in a paint spray booth or any explosive environment. Electric motors create sparks which may ignite dust or fumes.

OPERATION

1. This heater is intended for drying & warming of commercial/industrial buildings where adequate ventilation is provided. It is **NOT** for domestic use or for heating habitable areas.
2. The heater should **NOT** be used by children or persons with reduced physical, sensory or mental capabilities, or lack of experience and knowledge.
3. **CAUTION:** Some parts of this product can become very hot and cause burns. Particular attention should be given where, animals, children and vulnerable people are present.
4. The heater must only be used by people who have read these instructions and have been trained in its use.
5. **DO NOT** use if dropped.
6. **DO NOT** use if there is visible signs of damage.
7. **DO NOT** obstruct the air inlet and outlet sections of the heater.
8. **DO NOT** cover the heater with anything that could restrict the air flow.
9. **DO NOT** touch the heater casing or grille when first switched off, as these will be very hot and will take time to cool.
10. **DO NOT** get the heater wet or use in areas of high condensation.
11. **DO NOT** allow the power lead to touch hot surfaces.
12. **DO NOT** connect other appliances to the same mains socket as the heater.
13. **DO NOT** use this heater with a programmable timer used to switch it on automatically.
14. **DO NOT** leave the heater unattended.

SERVICE & REPAIRS

1. If necessary, have your heater repaired by a qualified person using identical replacement parts. This will ensure that the safety of the product is maintained.
2. Please keep these instructions in a safe place for future reference.

ELECTRICAL CONNECTIONS



WARNING: READ THESE ELECTRICAL SAFETY INSTRUCTIONS THOROUGHLY BEFORE CONNECTING THE PRODUCT TO THE MAINS SUPPLY.

Connect the mains lead to a standard, 230 Volt (50Hz) electrical supply through an approved 13 amp BS 1363 plug, or a suitably fused isolator switch.

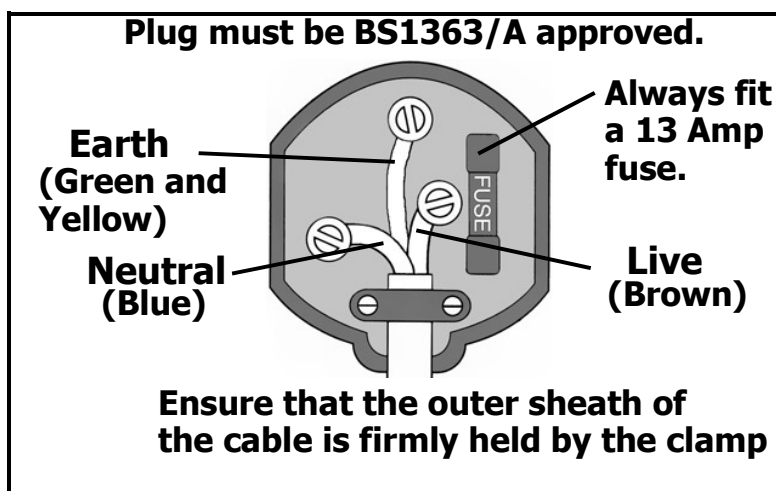
If the plug has to be changed because it is not suitable for your socket, or because of damage, it must be removed and a replacement fitted, following the wiring instructions shown below. The old plug must be discarded safely, as insertion into a power socket could cause an electrical hazard.



WARNING: THE WIRES IN THE POWER CABLE OF THIS PRODUCT ARE COLOURED IN ACCORDANCE WITH THE FOLLOWING CODE:
BLUE = NEUTRAL BROWN = LIVE YELLOW AND GREEN = EARTH

If the colours of the wires in the power cable do not agree with the markings on the plug.

- The BLUE wire must be connected to the terminal which is marked N or coloured black.
- The BROWN wire must be connected to the terminal which is marked L or coloured red.
- The YELLOW AND GREEN wire must be connected to the terminal which is marked E or \perp or coloured green.



We strongly recommend that this machine is connected to the mains supply through a Residual Current Device (RCD)

If you are not sure, consult a qualified electrician. **DO NOT** try to do any repairs.

OPERATION






WARNING: DO NOT USE THIS HEATER IN SMALL ROOMS WHEN THEY ARE OCCUPIED BY PERSONS NOT CAPABLE OF LEAVING THE ROOM ON THEIR OWN, UNLESS CONSTANT SUPERVISION IS PROVIDED.

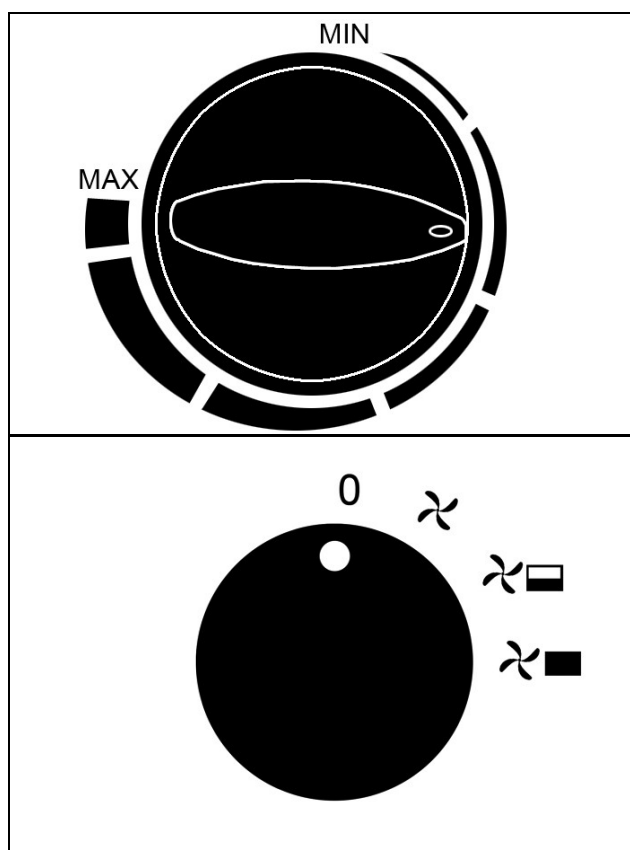


CAUTION: SOME PARTS OF THIS PRODUCT CAN BECOME VERY HOT AND CAUSE BURNS. PARTICULAR ATTENTION HAS TO BE GIVEN WHERE CHILDREN AND VULNERABLE PEOPLE ARE PRESENT.

1. Put the heater in a level position on a flat surface and at a safe distance from flammable materials. Keep a minimum of 2m clearance all round.
2. Connect the heater to a suitable power supply.
3. Set the thermostat control to the maximum setting (fully clockwise).

4. Set the mode selector to one of the 3 settings:

0	Off
	Fan Only
	Fan + Heat Setting 1
	Fan + Heat Setting 2



- The heater will take up to three minutes to reach optimum temperature.
5. Once the room reaches the required temperature, turn the thermostat control slowly counter-clockwise until the thermostat clicks, leave the control in this position.

- The room temperature will be maintained at this setting. The heater will continue to operate until the power switch is turned to the OFF position.
6. For fan only operation, turn the power switch to the fan only setting and set the thermostat to its minimum setting.
 7. When not in use, disconnect the heater from the mains supply. Store it in a safe, dry, childproof location.

ADJUSTING THE ANGLE

1. Loosen both handwheels.
2. Adjust to the the required angle.
3. Retighten the handwheels.



SAFETY SYSTEMS

THERMOSTATIC PROTECTION

The Devil 7003 has a manual reset thermal cut out to prevent the unit from overheating.

If the thermal cut out activates, then turn off the power and disconnect from the power supply. Allow the heater to cool down for several minutes before pressing the reset button. Reconnect to the power supply and turn on to resume operation.

ENVIRONMENTAL RECYCLING POLICY



Through purchase of this product, the customer is taking on the obligation to deal with the WEEE in accordance with the WEEE regulations in relation to the treatment, recycling & recovery and environmentally sound disposal of the WEEE.

In effect, this means that this product must not be disposed of with general household waste. It must be disposed of according to the laws governing Waste Electrical and Electronic Equipment (WEEE) at a recognised disposal facility.

MAINTENANCE



WARNING: ALWAYS DISCONNECT FROM THE POWER SUPPLY AND ALLOW THE HEATER IT TO COOL DOWN BEFORE PERFORMING ANY MAINTENANCE OR CLEANING TASKS.

- Clean the heater with a soft damp cloth, **DO NOT** use solvents or abrasives.
 - **DO NOT** allow the heating elements to become covered with dust which could become a fire hazard. If used in a dusty workplace it should be cleaned as described above.
 - Make sure that the heater grill is not blocked.
 - Check that the heater is in good working order. Take immediate action to repair or replace damaged parts.
 - No other maintenance is required, should you discover any problem with the heater, return it to the CLARKE service department for repair.
 - Please keep these instructions in a safe place for future reference.
-

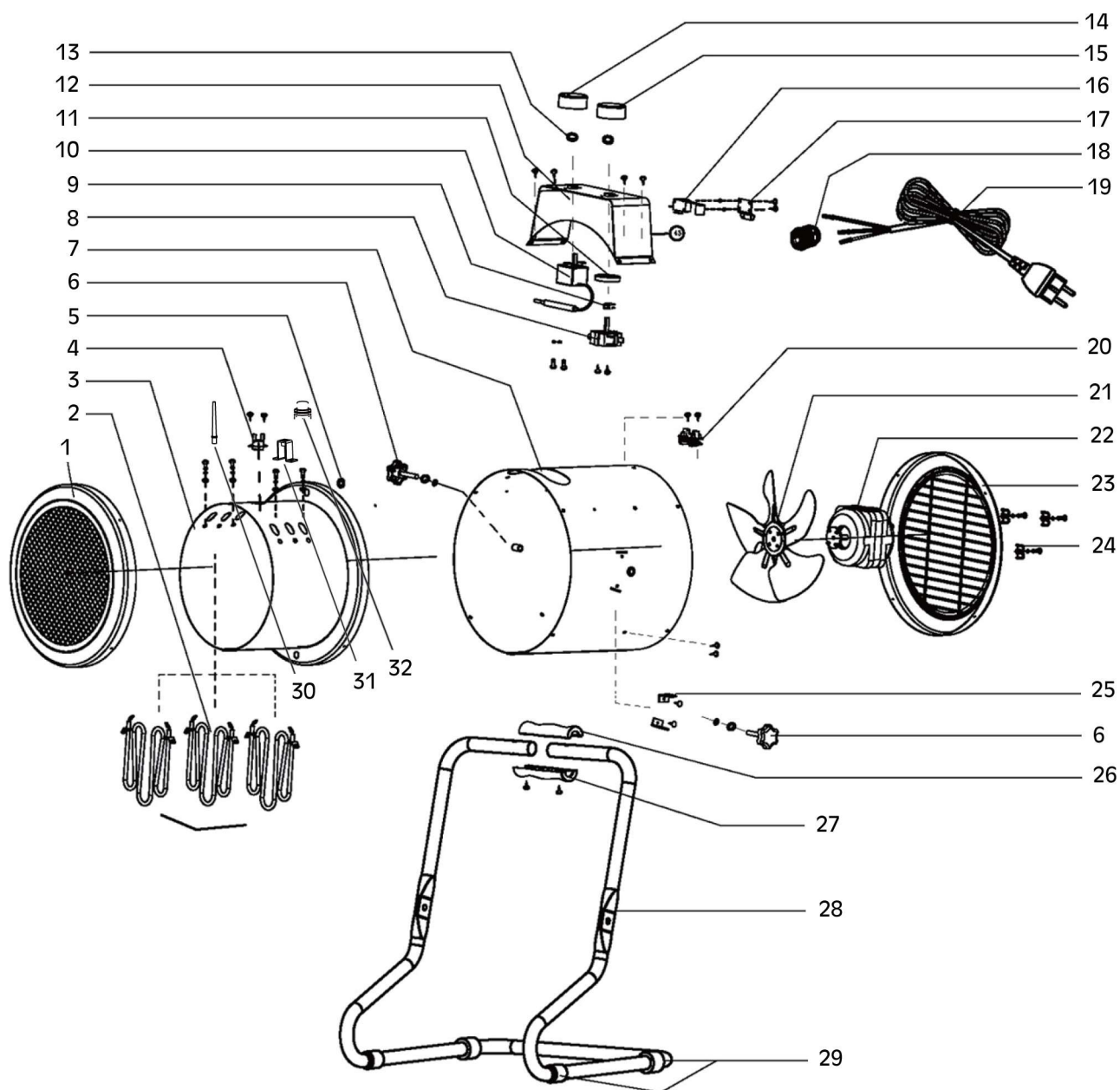
SPECIFICATIONS

Operating Voltage and Frequency: (V/Hz)	230 V / 50Hz
Operating Temperature: (Min/Max) (°C):	0-40°C
Heat Output: (kW):	3 kW
Air Output: (m ³ /h)	400m ³ /h
Safety Device:	Thermal cut-out / Tip over switch
Duty Cycle Classification:	S1 Continuous duty
Electrical Insulation Class	I
Product: Depth x Width x Height	302 x 334 x 390 mm
Product Weight	5.6 kg

TROUBLESHOOTING

Problem	Possible Cause	Remedy
Heater does not operate, although plugged in with the switch and thermostat switched on.	Plug is loose/bad connection.	Pull the plug out & check the connection of the plug and socket.
	Fuse blown or circuit breaker trips.	Replace if necessary and investigate cause. If fuse blows repeatedly, consult your CLARKE dealer.
	No power at socket outlet	Insert the plug in a functioning socket. Make sure that the heater is NOT using an extension lead.
Heating element glowing hot.	Input voltage too high.	Use a power supply in accordance with the rating on the label.
	Air inlet grille is blocked	Ensure the heater is kept away from any objects which could cover the air inlet or be drawn into it.
The unit has failed to heat up so only the air fan has operated.	Control switch not set at a "HEATING" level.	Turn switch to a heating level.
	Thermostat has tripped.	Turn the thermostat and listen. If there is no CLICK and the thermostat is not damaged, the heater will automatically switch ON when it has cooled down.
	The manually reset cut-out has operated.	Disconnect the power. Take a suitable pin and insert it into the manual RESET hole in the control panel. Press the RESET button and connect the circuit.
Abnormal noise.	Heater is not level.	Stand heater on a level surface

PARTS DIAGRAM



PARTS LIST

1	Front Grille	17	Fix Part For Tilt Switch
2	Heating Elements	18	Supply Cable Entry
3	Chassis Panel	19	Power Cable
4	Thermal Cut Out	20	Retaining Clips
5	Bush	21	Fan
6	Adjustable Knob	22	Motor
7	House Casing	23	Rear Grille
8	Speed Controller	24	Securing Plate
9	Location Part For Switch	25	Spacer
10	Temperature Controller	26	Plastic Handle Upper
11	Securing Rings	27	Plastic Handle Bottom
12	Control Box	28	Frame Handle
13	Fasten Spring	29	Foot Sleeve
14	Thermostat Knob	30	Temperature Control Top Rod
15	Switch Knob	31	Temperature Control Bracket
16	Tilt Over Switch	32	Button

Part number = (CXDEV7003 + the number of the part)

DECLARATION OF CONFORMITY - UKCA



Hemnall Street, Epping, Essex, CM16 4LG

DECLARATION OF CONFORMITY

This is an important document and should be retained.

We hereby declare that this product(s) complies with the following legislation:

2009/125/EC	<i>Ecodesign Directive</i>
2014/30/EU	<i>Electromagnetic Compatibility Directive</i>
2014/35/EU	<i>Low Voltage Directive</i>
2011/65/EU	<i>Restriction of Hazardous Substances (RoHS) Directive</i>

The following standards have been applied to the product(s):

EN 60335-1:2012+AC:2014+A11:2014+A13:2017+A1:2019+A14:2019+A2:2019+A15:2021+A16:2023, EN 60335-2-30:2009+A11:2012+A1:2020+A12:2020+A2:2022+A13:2022, IEC 62321-3-1:2013, EN 61000-3-3:2013+A1:2019+A2:2021, EN IEC 55014-1:2021, IEC 62321-7-1:2015, EN 62233:2008, EN 60675:1995+A1:1998+A2:2018+A11:2019, EN IEC 61000-3-2:2019+A1:2021, IEC 62321-5:2013, IEC 62321-4:2013+A1:2017, EN IEC 55014-2:2021, IEC 62321-7-2:2017, IEC 62321-6:2015, IEC 62321-8:2017, EN 50564:2011

The technical documentation required to demonstrate that the product(s) meet(s) the requirement(s) of the aforementioned legislation has been compiled and is available for inspection by the relevant enforcement authorities.

The UKCA mark was first applied in: 2022

Product Description: Joule Heater
Model Number(s): DEVIL 7003
Serial/Batch Number: Refer to product/package label
Date of Issue: 08/10/2025
Signed:

J.A Clarke

Director

DECLARATION OF CONFORMITY - CE



Clarke[®]
INTERNATIONAL

Fitzwilliam Hall, Fitzwilliam Place, Dublin 2

DECLARATION OF CONFORMITY

This is an important document and should be retained.

We hereby declare that this product(s) complies with the following legislation:

2009/125/EC	<i>Ecodesign Directive</i>
2014/30/EU	<i>Electromagnetic Compatibility Directive</i>
2014/35/EU	<i>Low Voltage Directive</i>
2011/65/EU	<i>Restriction of Hazardous Substances (RoHS) Directive</i>

The following standards have been applied to the product(s):

EN 60335-1:2012+AC:2014+A11:2014+A13:2017+A1:2019+A14:2019+A2:2019+A15:2021+A16:2023, EN 60335-2-30:2009+A11:2012+A1:2020+A12:2020+A2:2022+A13:2022, IEC 62321-3-1:2013, EN 61000-3-3:2013+A1:2019+A2:2021, EN IEC 55014-1:2021, IEC 62321-7-1:2015, EN 62233:2008, EN 60675:1995+A1:1998+A2:2018+A11:2019, EN IEC 61000-3-2:2019+A1:2021, IEC 62321-5:2013, IEC 62321-4:2013+A1:2017, EN IEC 55014-2:2021, IEC 62321-7-2:2017, IEC 62321-6:2015, IEC 62321-8:2017, EN 50564:2011

The technical documentation required to demonstrate that the product(s) meet(s) the requirement(s) of the aforementioned legislation has been compiled and is available for inspection by the relevant enforcement authorities.

The CE mark was first applied in: 2009

Product Description: Joule Heater
Model Number(s): DEVIL 7003
Serial/Batch Number: Refer to product/packaging label
Date of Issue: 08/10/2025
Signed:

J.A Clarke

Director

A SELECTION FROM THE VAST RANGE OF

Clarke®

QUALITY PRODUCTS



AIR COMPRESSORS
From DIY to industrial, Plus air tools, spray guns and accessories.

GENERATORS
Prime duty or emergency standby for business, home and leisure.

POWER WASHERS
Hot and cold, electric and engine driven - we have what you need

WELDERS
Mig, Arc, Tig and Spot. From DIY to auto/industrial.

METALWORKING
Drills, grinders and saws for DIY and professional use.

WOODWORKING
Saws, sanders, lathes, mortisers and dust extraction.

HYDRAULICS
Cranes, body repair kits, transmission jacks for all types of workshop use.

WATER PUMPS
Submersible, electric and engine driven for DIY, agriculture and industry.

POWER TOOLS
Angle grinders, cordless drill sets, saws and sanders.

STARTERS/CHARGERS
All sizes for car and commercial use.



PARTS & SERVICE:

0208 988 7400

Parts Enquiries
Parts@clarkeinternational.com

Servicing & Technical Enquiries
Service@clarkeinternational.com

SALES: UK 01992 565333 or Export 00 44 (0)1992 565335

Clarke® INTERNATIONAL Hemnall Street, Epping, Essex CM16 4LG
www.clarkeinternational.com